



CSH40

Undercounter Dishwasher



Leasing a dishmachine from Ecolab

allows you to focus on your business with the security of knowing your warewashing operation is properly managed.

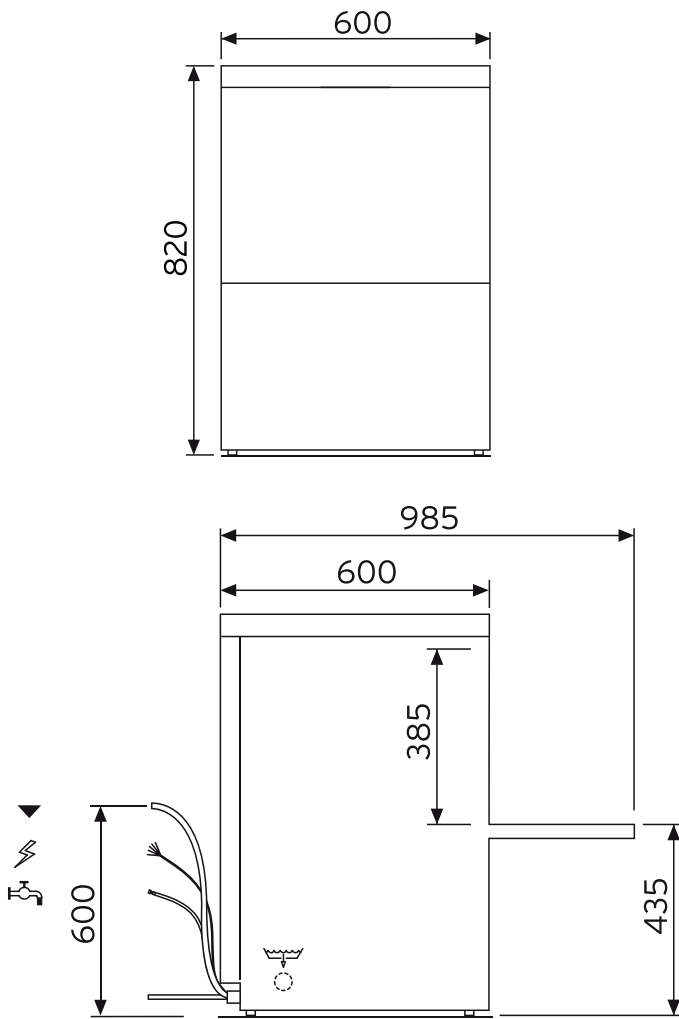
Superior Cleaning & Reliable Performance

- ▲ High temperature machine grants High level sanitization and fast drying.
- ▲ Compact and versatile dishwasher. **CSH40** can be the perfect companion in the kitchen or a back-up to the bigger machines. Efficient, user-friendly, reliable and
- ▲ Economic to run. The easily accessed, soft touch push-button controls puts at your fingertips, Three wash cycles depending on the soil level.
- ▲ All cycles are controlled through Thermostop technology to ensure Rinsing at right temperature and to achieve best results.
- ▲ **CSH40** features special Composite material wash and rinse parallel arms ensures to achieve best washing results with thorough cleaning.
- ▲ Included as standard equipment : built-in drain pump, rinse booster pump, detergent and rinse-aid dispensers .
- ▲ UL, certificate of conformity, water efficiency labelling scheme (WELS).
UL International-Singapore Pte Ltd is accredited by the Singapore Accreditation Council (SAC) for certification in respect of the Product Certification Scherme (ISO/IEC 17065:2012 and SAC CT 19:2019)



Certificate





CSH40 SPECIFICATION:

Overall dimension (width-depth-height) *open	mm	600x600(985*)x820
Packaging dimension (WxDxH)	mm	690x670x980
Gross weight	Kg	65
Net weight	Kg	59
Volume	mc	0,45
Rack size	mm	500x500
Max door/hood opening	mm	385
Max glasses/plate height	mm	355
General construction		Double skin
Door/hood construction		Double skin
Tank construction		Deep drawn
Tank volume	Liter	15
Tank heating element	W	1.400
Tank surface strainers		Stainless steel
Wash pump type		Double flow
Wash pump power	W	500
Wash temperature	°C	60
Boiler type		Without pressure
Boiler volume	Liter	6
Back-flow system		Break tank
Boiler heating element	W	6.000
Rinse booster pump		Yes
Rinse booster pump power	W	200
Rinse temperature	°C	80
Upper and lower rinse arms		Composite
Rinse water consumption	Liter/rack	1,6
Optimal external water pressure	Bar	2
Drain system		Deep drain
Drain pump		Yes
Rinse aid dispenser		Yes
Detergent dispenser		Yes
Interface		Top LED
Board		42
Wash cycle	Sec	90 - 120 - 180
Special cycles		Continuous - Self cleaning - Drain
Electric power	W	7.900
Electric connection	V-ph-Hz	400V 3N 50Hz
Fuse	A	16
Plates racks	Nr 1	780131
Flat rack	Nr 1	780132
Cutterly rack	Nr 1	780139
Electric cable		Yes
Drain hose		Yes
Fill hose		Yes

Solutions you can count on



CONSISTENTLY CLEANER TABLEWARE



ENERGY, WATER AND LABOR SAVINGS



ALL EMERGENCY AND SERVICE COSTS ARE INCLUDED



BEST-IN-CLASS CHEMISTRY AND DISHMACHINES



COMPREHENSIVE PROGRAM TO MEET YOUR OPERATIONAL NEEDS



ON SITE TRAINING ON PROCEDURES SPECIFIC TO YOUR FACILITY