



## CSH60ep

### Hood-Type Dishwasher



#### Leasing a dishmachine from Ecolab

allows you to focus on your business with the security of knowing your warewashing operation is properly managed.

#### Superior Cleaning & Reliable Performance

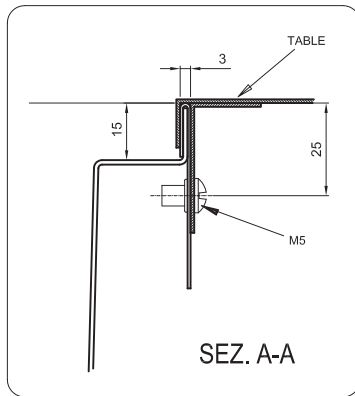
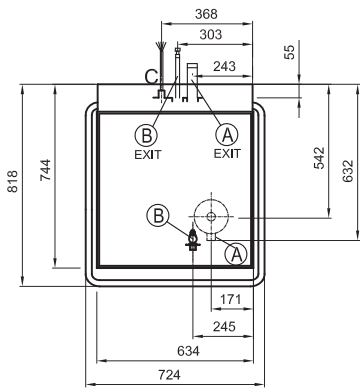
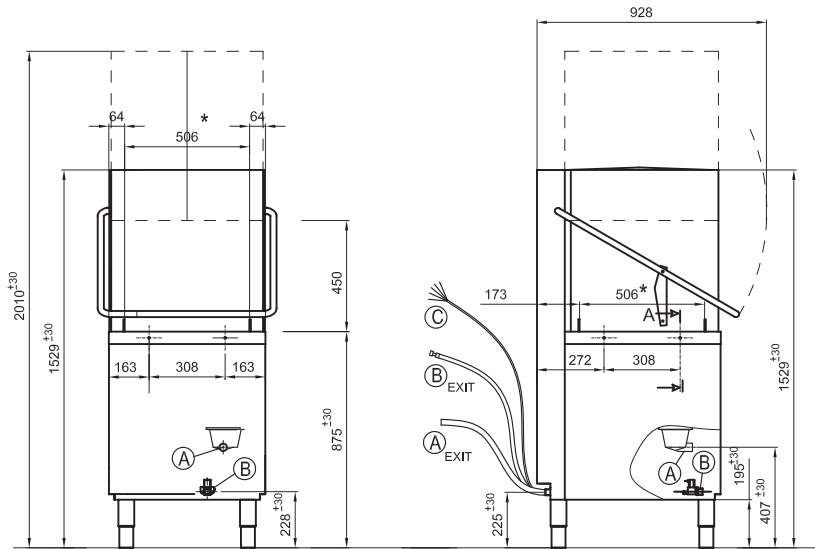
- ▲ High temperature machine grants High level sanitization and fast drying.
- ▲ **CSH60ep** offers a 450mm high wash chamber for pass through operation, within a compact footprint.
- ▲ The operator may select from 60 and 120 second wash cycle to rapidly wash any kind of kitchenware.
- ▲ All cycles are controlled through Thermostop technology to ensure rinsing at right temperature and to achieve best results.
- ▲ **CSH60ep** is able to accommodate 500mm x 500mm rack allowing larger plates, platters and GN containers to be washed with ease with the appropriate optional rack.
- ▲ **CSH60ep** features easily removable stainless steel wash and rinse arms to enable thorough cleaning.
- ▲ **CSH60ep** can be placed anywhere: the versatile design allows either in-line and corner installation .
- ▲ UL, certificate of conformity, water efficiency labelling scheme (WELS).  
UL International-Singapore Pte Ltd is accredited by the Singapore Accreditation Council (SAC) for certification in respect of the Product Certification Scheme (ISO/IEC 17065:2012 and SAC CT 19:2019)



Certificate



**CSH60ep SPECIFICATION:**



A	Ø 35 mm M	A EXIT	Ø 35 mm M
B	G 3/4" M	B EXIT	G 3/4" F
C	Power supply		

\* LUCE UTILE PER CESTELLO  
USEFUL SPACE FOR BASKET  
LUMIERE OUTILE POUR PANIER  
NUTZBARE OFFNUNG FÜR KORBE  
ABERTURA UTIL PARA CESTO

Overall dimension (width-depth-height) *open	mm	724x818x1529(2010*)
Packaging dimension (WxDxH)	mm	760x840x1520
Gross weight	Kg	125
Net weight	Kg	115
Volume	mc	0.97
Rack size	mm	500x500
Max door/hood opening	mm	450
Max glasses/plate height	mm	440/450
General construction		Single skin
Door/hood construction		Single skin
Tank construction		Deep drawn
Tank volume	Liter	20
Tank heating element	W	2.500
Tank surface strainers		Stainless steel
Wash pump type		Double flow
Wash pump power	W	700
Wash temperature	°C	66
Boiler type		Pressurized
Boiler volume	Liter	12
Back-flow system		Valve
Boiler heating element	W	12.000
Rinse booster pump		Yes
Rinse booster pump power	W	200
Rinse temperature	°C	85
Upper and lower rinse arms		Composite
Rinse water consumption	Liter/rack	2.7
Optimal external water pressure	Bar	2
Drain system		Overflow pipe
Drain pump		No
Rinse aid dispenser		No
Detergent dispenser		No
Wash cycle	Sec	60 - 120
Electric power	W	12.700
Electric connection	V-ph-Hz	400V 3N 50Hz
Fuse	A	25
Plates racks	Nr1	780131
Flat rack	Nr1	780132
Cutterly rack	Nr1	780139
Electric cable		Yes
Drain hose		Yes
Fill hose		Yes

**Solutions you can count on**



**CONSISTENTLY  
CLEANER TABLEWARE**



**ENERGY, WATER AND  
LABOR SAVINGS**



**ALL EMERGENCY AND  
SERVICE COSTS ARE  
INCLUDED**



**BEST-IN-CLASS  
CHEMISTRY AND  
DISHMACHINES**



**COMPREHENSIVE  
PROGRAM TO MEET  
YOUR OPERATIONAL NEEDS**



**ON SITE TRAINING ON  
PROCEDURES SPECIFIC  
TO YOUR FACILITY**